



POST MIDTERM REVISION
2024 – 2025

| | | |
|-------------------------------------|--------------|------------------|
| NAME: _____ | | DATE: / 11 /2024 |
| CLASS: IV SEC: _____ ROLL NO: _____ | SUBJECT: EVS | TR'S SIGN: |

General Instructions:

- This paper consists of **3** sections and **4** pages.
- All questions are compulsory.

SECTION – A

I. Read the following questions and circle the correct option.

- Which part of the plant develops into a flower?
a) root b) bud c) stem d) leaf
- A _____ makes its nest by collecting pebbles and bones and laying them on the ground.
a) hen b) kingfisher c) penguin d) woodpecker
- The cluster of eggs of a fish is called _____.
a) tadpole b) spawn c) pupa d) embryo
- Which one of the following is an example of a nocturnal animal?
a) cuckoo b) bat c) weaver bird d) humming bird
- The part of the plant that prevents it from being pulled out easily or blown away by the wind is called the _____.
a) root b) stem c) fruit d) seed
- Which of the following is the young one of a frog?
a) fry b) embryo c) larva d) tadpole
- A _____ makes its nest with materials such as fine strips of palm, banana leaves and grass.
a) tailor bird b) sparrow c) pigeon d) weaver bird
- The yellow substance inside a bird's egg is called _____.
a) albumen b) yolk c) embryo d) spawn

II. Match the following.

| Column A | | Column B | |
|-------------------------------------|------------------|----------|-----------------------------|
| 1. | arboreal animals | a. | animals which fly in air |
| 2. | fish and frog | b. | festival of planting trees |
| 3. | Van Mahotsav | c. | animals which live in trees |
| 4. | aerial animals | d. | lay eggs in water |
| 1) _____ 2) _____ 3) _____ 4) _____ | | | |

III. State whether the following statements are True or False.

| | |
|---|--|
| 1. Trees like pine and fir are found in cold hilly areas. | |
| 2. Animals like earthworms, snakes and rabbits live in underground colonies. | |
| 3. Insects like the butterfly and the housefly have six stages in their life cycle. | |
| 4. The process by which animals produce their young ones is called reproduction. | |

SECTION – B**IV. Give the reason for the following statements.**

1) The Banyan tree has special rope-like growths that hang down from its branches.

Ans: _____

2) Tortoise and snail carry a shell on their back.

Ans: _____

3) Cockroaches hide their eggs in dark corners.

Ans: _____

V. Observe the given pictures and answer the questions that follow.

1. The picture given alongside shows different parts of a flower.

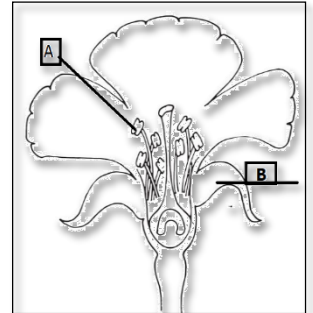
A. Identify the parts labeled as A and B in the diagram. Write the answers below.

A. _____

B. _____

B. Write the main function of a flower.

Ans: _____



2. Meera and Sumit noticed a bird's nest while playing in a neighbouring park. They were trying to recall the lesson on birds and their habitat that was taught in class. Help them to answer the questions below.

A. Identify the bird.

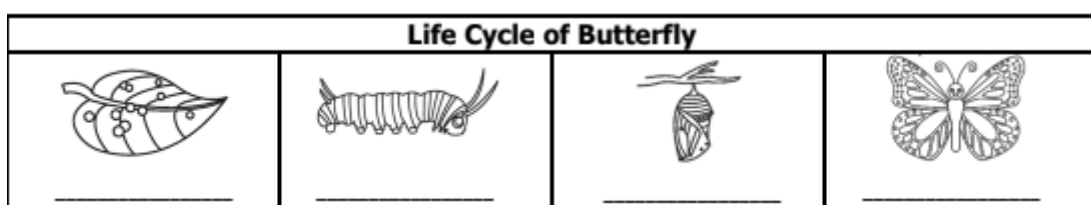
Ans: _____

B. How does it make its nest?

Ans: _____



3. Label the stages involved in the life cycle of a butterfly in the given picture.



VI. Answer the following questions.

1) Define Nocturnal Animals: _____

2) What is albumen?

Ans: _____

3) Describe how the Kingfisher builds its nest.

Ans: _____

4) Where do reptiles lay their eggs? How do their eggs get warmth?

Ans: _____

5) Differentiate between the following. (2 points)

| Tap Root System | Fibrous Root System |
|-----------------|---------------------|
| | |
| | |
| | |
| | |
| | |
| | |
| | |
| | |
| | |
| | |
| | |